



Kenton C. Ward, CFM
Surveyor of Hamilton County
Phone (317) 776-8495
Fax (317) 776-9628

Suite 188
One Hamilton County Square
Noblesville, Indiana 46060-2230

Map Correction-Field Verification

Drain Number: #350

Drain Length: n/a

Drain Name: Stephens & Clark

Change + / - : n/a

Date: 10-30-2012

New Length: n/a

Verified By: SAB

Notes & Sketch: See attached Map

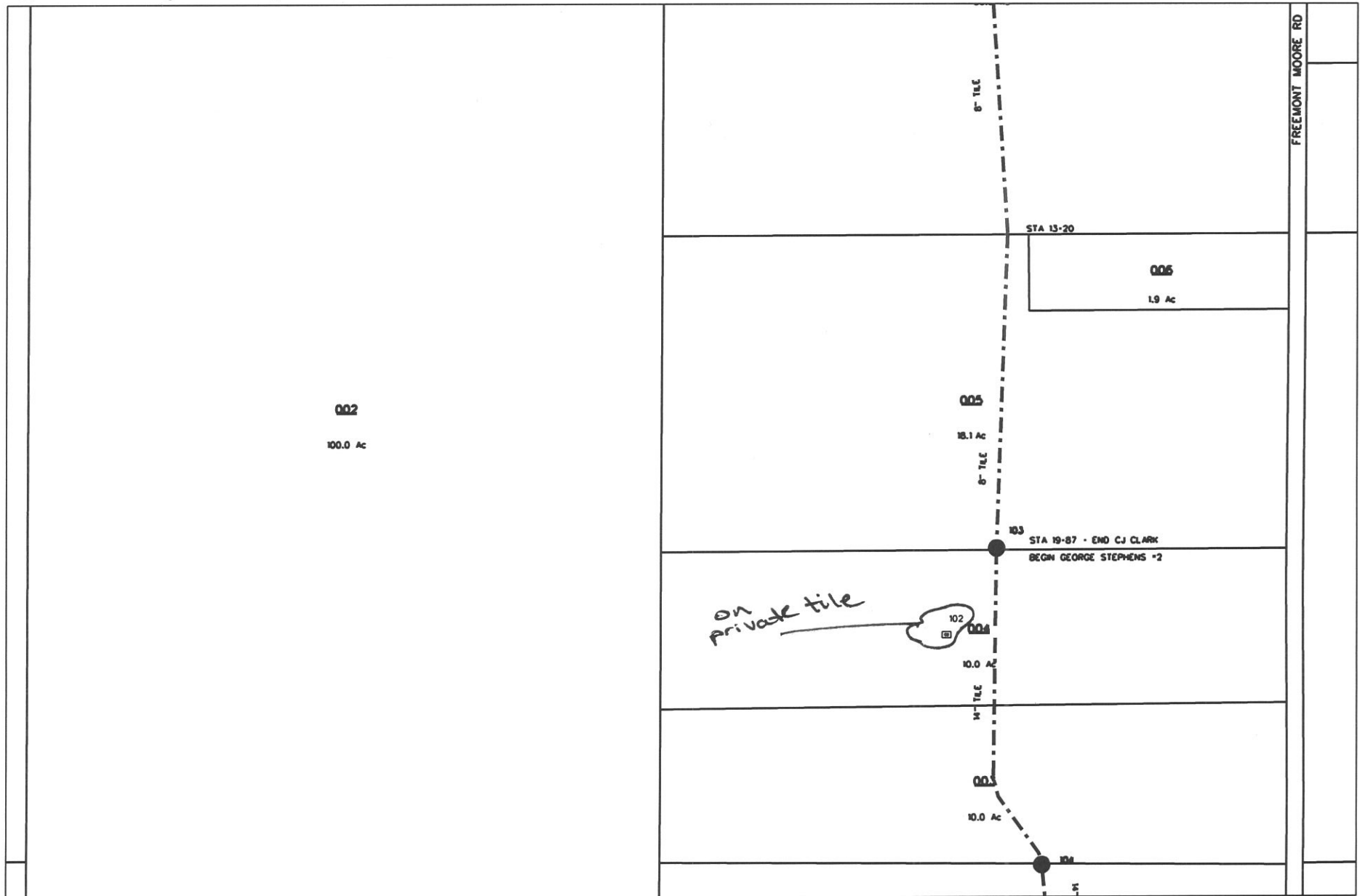
Two breathers were set and the tile was located between them. There was a catch basin (structure 102) property that was believed to be on the regulated drain. This determined not to be the case. The catch basin sits on a private tile.



Suzanne L. Mills
GIS Specialist

#350 Stephens & Clark

206th ↑



reg_drain_hc.dgn 10/29/2012 2:52:56 PM